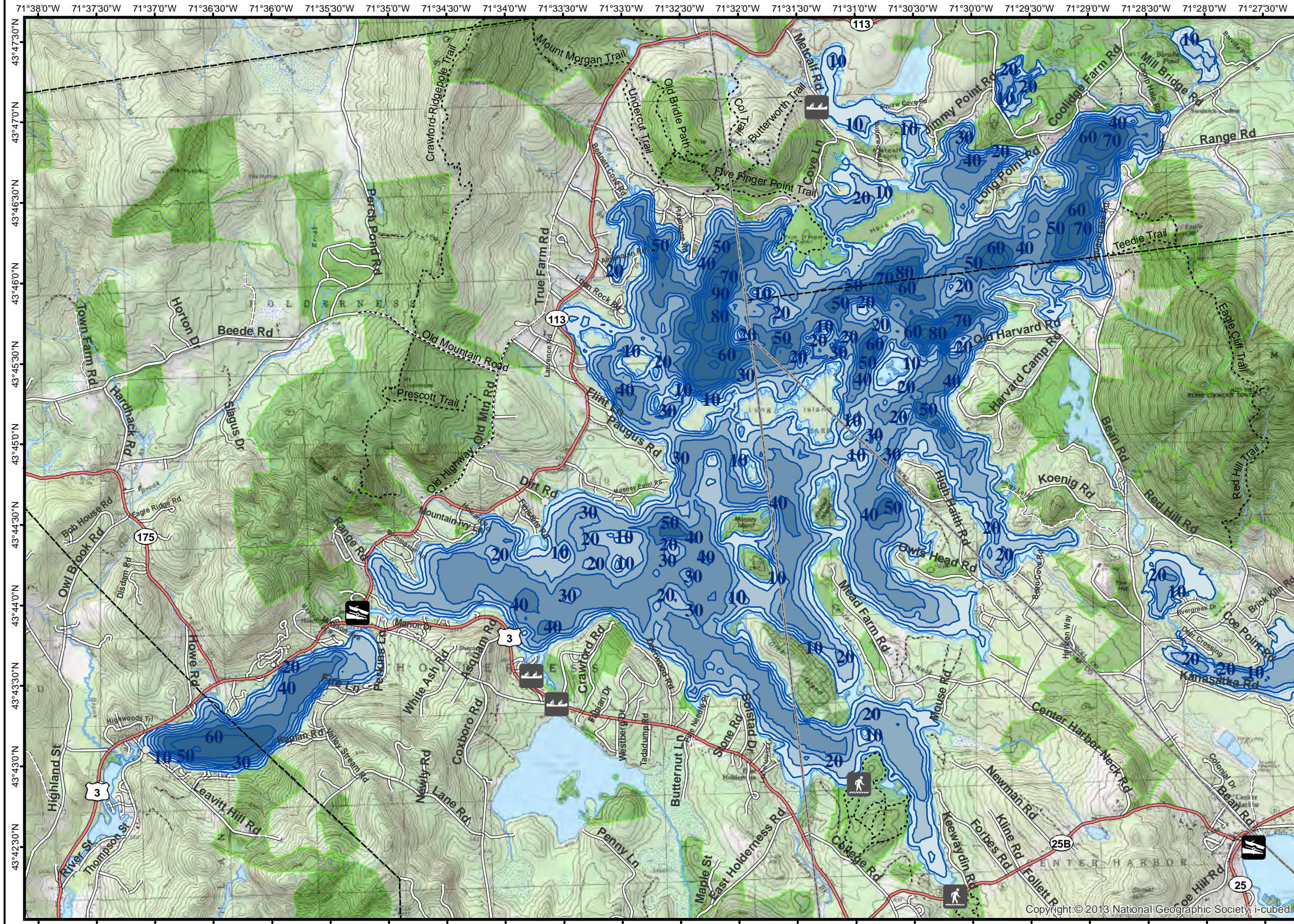


For fishing regulation information, please refer to the NHFGD Freshwater Fishing Digest. Contact: NHFGD Region 2 (Lakes Region), New Hampton
 E-mail: reg2@wildlife.nh.gov Phone: 603-744-5470



SQUAM LAKE Holderness

FISHERY: Cold/Warm **ACRES:** 6,791

TROPIC LEVEL:

AVG. DEPTH: 0 **MAX. DEPTH:** 0

SPECIES: RT,LLS,LT,LW,SMB,LMB,ECP,HP,WP

ADDITIONAL INFO: lake trout and/or salmon lake; boat/speed restrictions

ACCESS: NHFG ramp on Squam channel

Please contact NH Dept of Safety, Marine Patrol for info. on water body/boat/motor restrictions: (603) 293-2037 www.nhmarinepatrol.com

Public Water Access site

Canoe/cartop

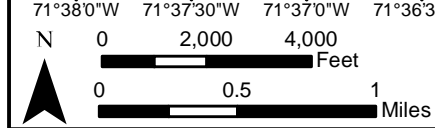
Shorebank

Ramp

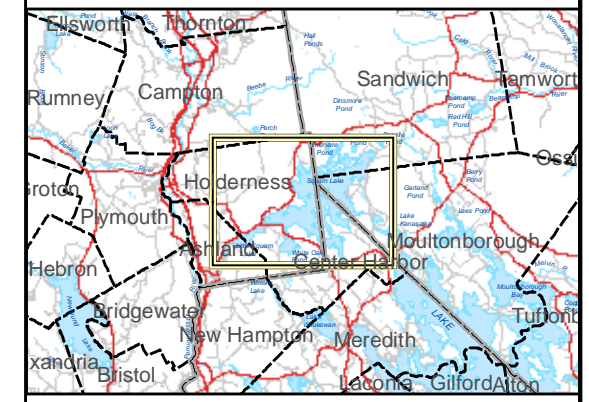
Bathymetric contour (feet)

Bathymetry provided by the NH Department of Environmental Services, Watershed Mgt Bureau

- Town boundary
 - Primary Route
 - Road or Street
 - Trail or other
 - Stream or Shoreline
 - Surface Water
 - Wetland
 - Conservation or Public land
 - Cleared Forest
 - Contour
 - Building
 - Restricted Access Conservation
- Source: USGS



Most data presented on this map represent stock data sets obtained from NH GRANIT, Complex Systems Research Center, UNH. CSRC, NHOEP, NHFGD and the cooperating agencies make no claim as to the validity or reliability or to any implied uses of these data. NOT FOR NAVIGATION.



Directions: Rt 113 Holderness